

Tech Guide

H2650i LSA MAX 115mm ETC



PN - 99-EK-A16867

Harrop TVS2650 H2650i LSA

Supercharger kit – MAX EFFORT



ENGINEERING PERFORMANCE SINCE 1955

1

04/04/2024

Tech Guide

H2650i LSA MAX 115mm ETC

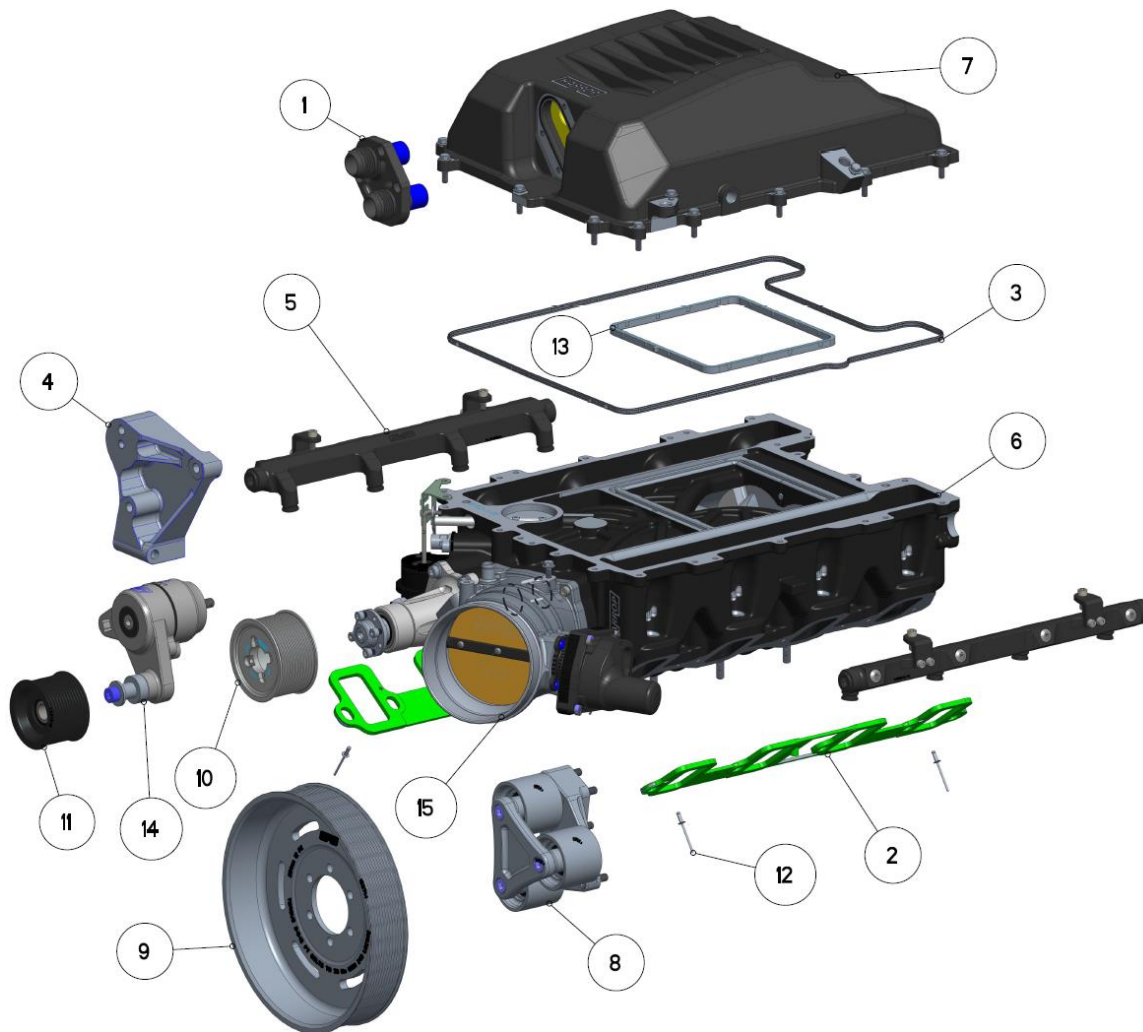


PN - 99-EK-A16867

Harrop TVS2650 H2650i LSA

Supercharger kit – MAX EFFORT

ITEM	DESCRIPTION	QTY	DRAWING
1	FITTING, 2 x DASH 16, INTERCOOLER, LSA	1	15112-1
2	GASKET, INSULATOR, MANIFOLD, SUPERCHARGER, HARROP	2	12526-0
3	GASKET, LSA LID, 12613457	1	-
4	KIT, CONVERSION, LSA-DRIVE, LS3, ASSEMBLY	1	A14372-3
5	KIT, FUEL RAIL LSA H2650i	1	A15743-1
6	MANIFOLD, SUPERCHARGER, ASSEMBLY, LSA2650, RACE PORT	1	A14942-2-RP
7	MANIFOLD, UPPER, LSA	1	A15045-3
8	MOUNT, IDLER, LSA, 12PK, ASSEMBLY	1	A15279-1
9	PULLEY, 12PK, 254 DIAMETER, TO SUIT ATI AT1918854 BALANCER	1	15271-1
10	PULLEY, SUPERCHARGER, 85MM, LSA, 12PK	1	15231-0
11	PULLEY, TENSIONER, Ø70, 12PK, LSA, ASSEMBLY	1	A15316-0
12	RIVET, BLIND, ASP-5-4	4	-
13	SEAL, LSA INTERCOOLER PLENUM	1	16680-0
14	TENSIONER, BILLET, 8/10/12PK LSA, ASSEMBLY	1	A15259-2
15	THROTTLE, INTERGRATED, 115MM, LSA2650	1	A15139-3

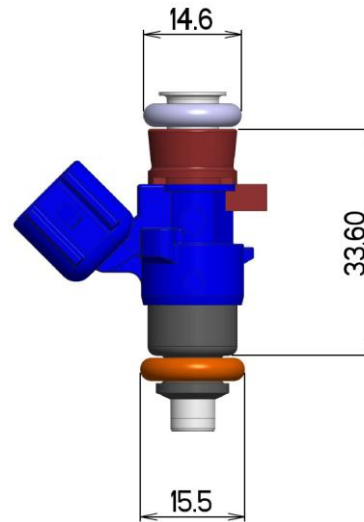


ENGINEERING PERFORMANCE SINCE 1955

2
04/04/2024

Fuel System

- Manifold assembly will accept EV14 compact injectors with a 14.6mm top O-ring and 15.5mm bottom O-ring such as DeatschWerks 16U-00-0090-8.
- Rail fitting size is -8 ORB both ends.
- Fuel rails also have side plugs opposite each injector with an M10x1.0 ORB port.

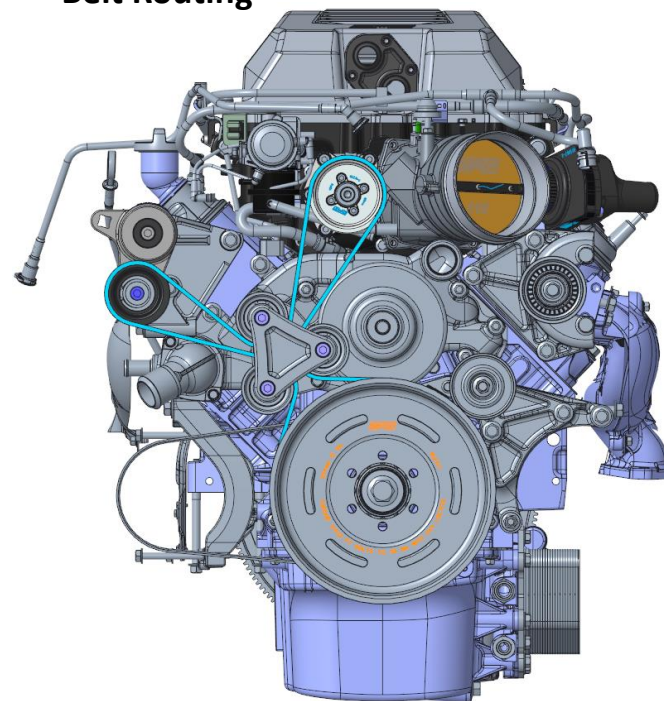


Accessory Drive

Supercharger Pulley

LSA MAX 12PK	Diameter	Supercharger pulley	Tensioner pulley	Belt
	85mm	99-PLY15231-GT	99-APLY15316	12PK1831
	80mm	99-PLY15230-GT	99-APLY15315	12PK1831
	75mm	99-PLY15229-GT	99-APLY15315	12PK1831
	70mm	99-PLY15228-GT	99-APLY15266	12PK1831

Belt Routing



- The Eaton TVS2650 rotating group is validated up to 18,000 supercharger RPM. Exceeding this supercharger speed will void the supercharger product warranty.

115mm ETC Throttle body

- Designed to maximize the air flow path to the Supercharger inlet, increasing the throttle opening diameter from Ø87mm stock up to Ø115mm
- Retains all factory mounting points for LSA inlet map sensor, fuel tank purge valve, brake booster outlet and all required vacuum ports
- Custom intake duct required (5"/127mm throttle body inlet OD) or Harrop Carbon Edition LSA Cold Air Intake to suit upgraded 115mm Throttle Body
- Maximum Supercharger pulley is Ø90mm
- Available in ETC and Cable configuration - for more information please download the Tech Guide below.
- ECU Recalibration is required after installation
- CTS-V Power steering reservoir will require remote mounting