

BTR Delphi LS7 lifter cleaning procedure

When receiving your new LS7 lifters we recommend removing them from the packaging and checking

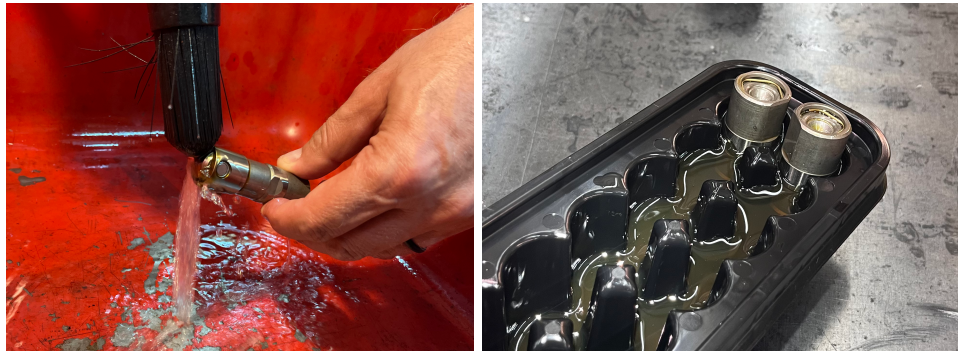
for any obvious signs of damage to the lifter body or wheels.

The lifters should then be washed in either an automotive solvent tank or with mineral spirits to help remove the stiff packing grease used during lifter assembly . We then recommend you check rollers for any binding or roughness before soaking .

Afterwards we recommend using the supplied BTR lifter packaging to soak them in oil to help lubricate the axle bearings and lifter internals.

WE ALWAYS RECOMMEND THE USE OF NEW, FACTORY TYPE LIFTER TRAYS WHEN INSTALLING NEW LIFTERS!

(Correct factory weight oil used in your engine is fine)



BTR Delphi LS7 lifter cleaning procedure

When receiving your new LS7 lifters we recommend removing them from the packaging and checking

for any obvious signs of damage to the lifter body or wheels.

The lifters should then be washed in either an automotive solvent tank or with mineral spirits to help remove the stiff packing grease used during lifter assembly . We then recommend you check rollers for any binding or roughness before soaking .

Afterwards we recommend using the supplied BTR lifter packaging to soak them in oil to help lubricate the axle bearings and lifter internals.

WE ALWAYS RECOMMEND THE USE NEW FACTORY TYPE LIFTER TRAYS WHEN INSTALLING NEW LIFTERS !

(Correct factory weight oil used in your engine is fine)

